

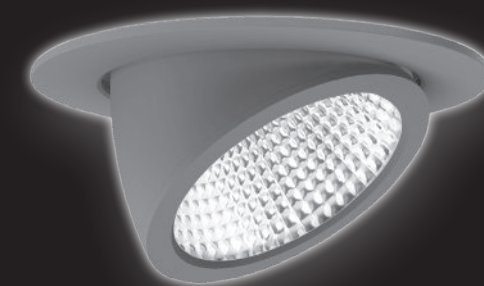
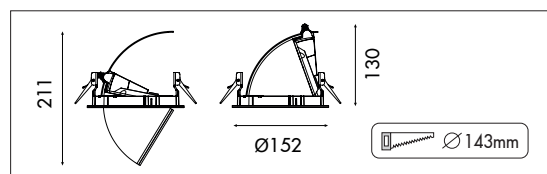
Compacte krachtige draaibare (350°) en kantelbare (80°) LED spot. Voorzien van LED met hoge lichtopbrengst (max. 136lm/w). Met lichtgewicht innovatief heat pipe systeem voor passieve koeling van de LED. Behuizing gemaakt van grijs (RAL 9006) gelakt gegoten aluminium. Snelle en eenvoudige montage met veren. Wordt geleverd inclusief externe driver. Directe aansluiting op 220-240VAC. Onderhoudsarm en hoge levensduurverwachting (50.000 uur L90B10). Kleur stabiliteit, Mac Adam <3. Vijf jaar garantie.

Compact LED spot light for powerful general or accent lighting. Rotates through 350° and pivots through 80°. With high efficiency LED (max. 136lm/w). Faceted glossy 99,98% aluminium reflector with clear tempered glass diffuser. very suitable as spot light in shops. Housing made of grey (RAL 9006) lacquered cast aluminum. Delivered including external driver. Direct connection to 220-240VAC. Low maintenance and high life expectancy (50.000 hours L90B10). Colour stability, Mac Adam <3. Fast and easy mounting with springs. Five years warranty.

Wattage Watts	Kleur Colour	Lumen* Lumen*	CRI CRI	Graden Degree	kg	Noodvoorz. (u) Emergency (h)	Artikel nr. Article no.	1-10V 1-10V	Dali Dali
9w	3000k	1170	>90	10°	0,8	1/3	29610G.0910.30	29610G.0910.31	29610G.0910.32
13w	3000k	1545	>90	10°	0,8	1/3	29610G.1310.30	29610G.1310.31	29610G.1310.32
19W	3000k	2045	>90	10°	0,8	1/3	29610G.1910.30	29610G.1910.31	29610G.1910.32
28w	3000k	2555	>90	10°	0,8	1/3	29610G.2810.30	29610G.2810.31	29610G.2810.32
9W	3000k	1280	>90	15°	0,8	1/3	29610G.0915.30	29610G.0915.31	29610G.0915.32
12w	3000k	1740	>90	15°	0,8	1/3	29610G.1215.30	29610G.1215.31	29610G.1215.32
18w	3000k	2400	>90	15°	0,8	1/3	29610G.1815.30	29610G.1815.31	29610G.1815.32
25w	3000k	3220	>90	15°	0,8	1/3	29610G.2515.30	29610G.2515.31	29610G.2515.32
33w	3000k	3980	>90	15°	0,8	1/3	29610G.3315.30	29610G.3315.31	29610G.3315.32
9W	3000k	1300	>90	20°	0,8	1/3	29610G.0920.30	29610G.0920.31	29610G.0920.32
12w	3000k	1760	>90	20°	0,8	1/3	29610G.1220.30	29610G.1220.31	29610G.1220.32
18w	3000k	2425	>90	20°	0,8	1/3	29610G.1820.30	29610G.1820.31	29610G.1820.32
25w	3000k	3260	>90	20°	0,8	1/3	29610G.2520.30	29610G.2520.31	29610G.2520.32
33w	3000k	4030	>90	20°	0,8	1/3	29610G.3320.30	29610G.3320.31	29610G.3320.32
9W	3000k	1330	>90	40°	0,8	1/3	29610G.0940.30	29610G.0940.31	29610G.0940.32
12w	3000k	1800	>90	40°	0,8	1/3	29610G.1240.30	29610G.1240.31	29610G.1240.32
18w	3000k	2480	>90	40°	0,8	1/3	29610G.1840.30	29610G.1840.31	29610G.1840.32
25w	3000k	3340	>90	40°	0,8	1/3	29610G.2540.30	29610G.2540.31	29610G.2540.32
33w	3000k	4130	>90	40°	0,8	1/3	29610G.3340.30	29610G.3340.31	29610G.3340.32
9w	4000k	1230	>90	10°	0,8	1/3	29610G.0910.40	29610G.0910.41	29610G.0910.42
13w	4000k	1620	>90	10°	0,8	1/3	29610G.1310.40	29610G.1310.41	29610G.1310.42
19w	4000k	2145	>90	10°	0,8	1/3	29610G.1910.40	29610G.1910.41	29610G.1910.42
28w	4000k	2680	>90	10°	0,8	1/3	29610G.2810.40	29610G.2810.41	29610G.2810.42
9W	4000k	1345	>90	15°	0,8	1/3	29610G.0915.40	29610G.0915.41	29610G.0915.42
12w	4000k	1835	>90	15°	0,8	1/3	29610G.1215.40	29610G.1215.41	29610G.1215.42
18w	4000k	2515	>90	15°	0,8	1/3	29610G.1715.40	29610G.1715.41	29610G.1715.42
25w	4000k	3385	>90	15°	0,8	1/3	29610G.2515.40	29610G.2515.41	29610G.2515.42
33w	4000k	4185	>90	15°	0,8	1/3	29610G.3315.40	29610G.3315.41	29610G.3315.42
9W	4000k	1360	>90	20°	0,8	1/3	29610G.0920.40	29610G.0920.41	29610G.0920.42
12w	4000k	1855	>90	20°	0,8	1/3	29610G.1220.40	29610G.1220.41	29610G.1220.42
18w	4000k	2545	>90	20°	0,8	1/3	29610G.1820.40	29610G.1820.41	29610G.1820.42
25w	4000k	3430	>90	20°	0,8	1/3	29610G.2520.40	29610G.2520.41	29610G.2520.42
33w	4000k	4240	>90	20°	0,8	1/3	29610G.3320.40	29610G.3320.41	29610G.3320.42
9W	4000k	1400	>90	40°	0,8	1/3	29610G.0940.40	29610G.0940.41	29610G.0940.42
12w	4000k	1900	>90	40°	0,8	1/3	29610G.1240.40	29610G.1240.41	29610G.1240.42
18w	4000k	2610	>90	40°	0,8	1/3	29610G.1840.40	29610G.1840.41	29610G.1840.42
25w	4000k	3510	>90	40°	0,8	1/3	29610G.2540.40	29610G.2540.41	29610G.2540.42
33w	4000k	4340	>90	40°	0,8	1/3	29610G.3340.40	29610G.3340.41	29610G.3340.42

\* Lichtstroom van armatuur, tolerantie van +/- 10%

\* Luminaire luminous flux, tolerance of +/- 10%

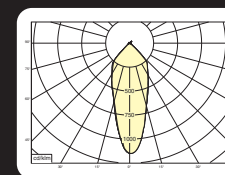


#### Opties:

- 1,5 meter snoer met 3-polige Schuko stekker
- 0,5 meter snoer + GST18i3® connector (niet - dimbaar)
- 0,5 meter snoer + GST18i3® and BST14i2 connector (dim)
- 0,5 meter snoer + GST18i5® Blue connector male (dim)
- 2700K, 3500k, 5000k of hogere CRI waarde 90/97
- Vlees, brood of Crisp White

#### Options:

- 1,5m cable with Schuko 3-pin plug
- 0,5 meter cable + GST18i3® connector (non - dimmable)
- 0,5 meter cable + GST18i3® and BST14i2 connector (dim)
- 0,5 meter cable + GST18i5® Blue connector male (dim)
- 2700k, 3500k, 5000k or higher CRI values 90/97
- Meat, bread or Crisp White



#### 29610G.2515.40

25w 4000k 15° 3385lm  
ηLB 82,9%