



Elegant en slank LED pendel armatuur met directe/indirecte lichtbundel. Behuizing gemaakt van geëxtrudeerd aluminium. Voorzien van breedstralende (>94°) hoogwaardig Micro Prisma diffuser (UGR<19). Tunable white - dynamisch mengen van licht kleur tussen 2700K en 6500K. Geschikt voor o.a. scholen, kantoren, recepties en galerieën. Alle elektronische componenten in de behuizing. Wordt geleverd inclusief pendel accessoires: staalkabels (3m) en snoer (3,5m). Onderhoudsarm en hoge levensduurverwachting (50.000 uur L80B10). Kleur stabiliteit, Mac Adam <3. Vijf jaar garantie.

Elegant and slim suspended LED luminaire with direct/indirect beam angle. Housing made out of extruded aluminium. Equipped with high quality wide angle (>94°) Micro Prisma diffuser (UGR<19). Tunable white - dynamic mixing of light colour, linear colour mixing between 2700K and 6500K. Suitable for schools, offices, reception areas, and galleries. All electronic components inside the housing. Delivered including pendant suspension, steel cables (3m) and mains cable (3,5m). Low maintenance and high life expectancy (50.000 hours L80B10). Colour stability, Mac Adam <3. Warranty 5 years.

Micro Prisma / Micro Prism

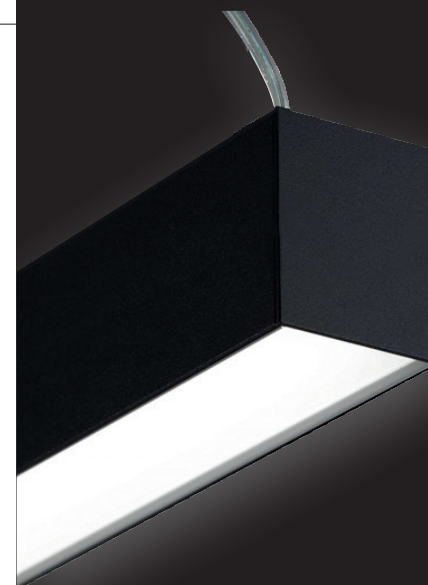
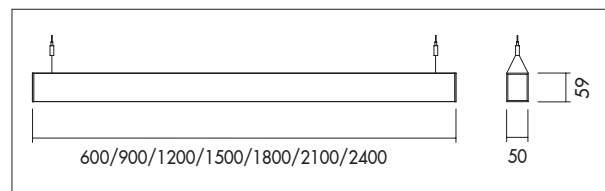
Wattage Watts	Kleur Colour	Lumen* Lumen*	L (mm) L (mm)	B (mm) W (mm)	H (mm) H (mm)	kg	Noodvoorz. (u) Emergency (h)	Dali Dali	Casambi Casambi
20w+13w	2700-6500k	2400+1560	600	50	59	0,9	1/3	61018BM.20TW2DI	61018BM.20TW5DI
30w+20w	2700-6500k	3600+2400	900	50	59	1,3	1/3	61018BM.30TW2DI	61018BM.30TW5DI
39w+26w	2700-6500k	4680+3120	1200	50	59	1,7	1/3	61018BM.39TW2DI	61018BM.39TW5DI
49w+32w	2700-6500k	5880+3840	1500	50	59	2,1	1/3	61018BM.49TW2DI	61018BM.49TW5DI
59w+38w	2700-6500k	7080+4560	1800	50	59	2,5	1/3	61018BM.59TW2DI	61018BM.59TW5DI
69w+44w	2700-6500k	8280+5280	2100	50	59	3,0	1/3	61018BM.69TW2DI	61018BM.69TW5DI
79w+50w	2700-6500k	9480+6000	2400	50	59	3,4	1/3	61018BM.79TW2DI	61018BM.79TW5DI

Opaal / Opal

Wattage Watts	Kleur Colour	Lumen* Lumen*	L (mm) L (mm)	B (mm) W (mm)	H (mm) H (mm)	kg	Noodvoorz. (u) Emergency (h)	Dali Dali	Casambi Casambi
20w+13w	2700-6500k	2280+1480	600	50	59	0,9	1/3	61018BP.20TW2DI	61018BP.20TW5DI
30w+20w	2700-6500k	3420+2280	900	50	59	1,3	1/3	61018BP.30TW2DI	61018BP.30TW5DI
39w+26w	2700-6500k	4445+2965	1200	50	59	1,7	1/3	61018BP.39TW2DI	61018BP.39TW5DI
49w+32w	2700-6500k	5585+3650	1500	50	59	2,1	1/3	61018BP.49TW2DI	61018BP.49TW5DI
59w+38w	2700-6500k	6725+4330	1800	50	59	2,5	1/3	61018BP.59TW2DI	61018BP.59TW5DI
69w+44w	2700-6500k	7865+5015	2100	50	59	3,0	1/3	61018BP.69TW2DI	61018BP.69TW5DI
79w+50w	2700-6500k	9005+5700	2400	50	59	3,4	1/3	61018BP.79TW2DI	61018BP.79TW5DI

* Lichtstroom van armatuur, tolerantie van +/- 10%

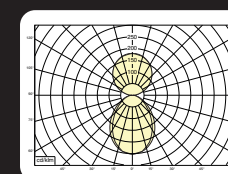
* Luminaire luminous flux, tolerance of +/- 10%

**Opties:**

- Geïntegreerde bewegingssensor
- Corridor functie
- EasySense-sensor

Options:

- Integrated motionsensor
- Corridor function
- EasySense-sensor



61018BM.20TW2DI
20w+13w 2700-6500k 2400+1560lm
ηLB 100%