

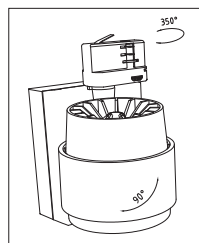
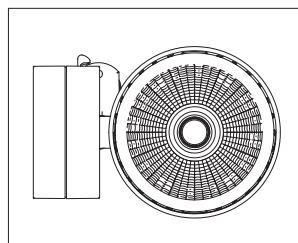
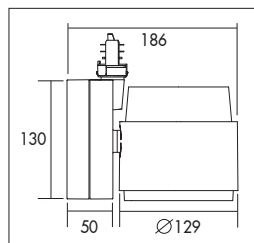
Ultra efficiënte hoogwaardige LED spotlight voor 3-fase rails. Miro-Silver® hoogglans reflector met extreem hoog rendement (LOR>97%) in vier bundelbreedtes. Zeer lage verblinding (UGR<12) voor spot en medium bundel reflectoren. Behuizing van gelakt aluminium met passieve koeling. 350° draaibaar en 90° kantelbaar. Zeer geschikt als richtspot in winkels waar de hoogste eisen aan rendementen worden gesteld. Inclusief interne driver. Voorzien van 3-fase adapter. Onderhoudsarm en hoge levensduurverwachting. Kleur stabiliteit, Mac Adam <3. Vijf jaar garantie.

Ultra-efficient top range LED spot light for 3-phase tracks. Miro-Silver® specular reflector with extremely high efficiency (LOR>97%) and four beam angles. Very low glare (UGR<12) for spot and medium beam angle reflectors. Die casted aluminium painted housing. Rotates through 350° and pivots through 90°. Very suitable as directional spot light in shops where the highest demands for quality of light are needed. Supplied including internal driver and 3-phase adapter. Low maintenance and high life expectancy. Colour stability, Mac Adam <3. Five years warranty.

Wattage Watts	Kleur Colour	Lumen* Lumen*	CRI CRI	Graden Degree	Gewicht (kg) Weight (kg)	Artikel nr. Article no.	1-10V 1-10V	Dali Dali
18w	3000k	2840	>80	16°	1,7	20044W.18.16.30	20044W.18.16.31	20044W.18.16.32
18w	3000k	2870	>80	24°	1,7	20044W.18.24.30	20044W.18.24.31	20044W.18.24.32
18w	3000k	2870	>80	36°	1,7	20044W.18.36.30	20044W.18.36.31	20044W.18.36.32
18w	3000k	2960	>80	60°	1,7	20044W.18.60.30	20044W.18.60.31	20044W.18.60.32
25w	3000k	3880	>80	16°	1,7	20044W.25.16.30	20044W.25.16.31	20044W.25.16.32
25w	3000k	3920	>80	24°	1,7	20044W.25.24.30	20044W.25.24.31	20044W.25.24.32
25w	3000k	3920	>80	36°	1,7	20044W.25.36.30	20044W.25.36.31	20044W.25.36.32
25w	3000k	4042	>80	60°	1,7	20044W.25.60.30	20044W.25.60.31	20044W.25.60.32
33w	3000k	4855	>80	16°	1,7	20044W.33.16.30	20044W.33.16.31	20044W.33.16.32
33w	3000k	4905	>80	24°	1,7	20044W.33.24.30	20044W.33.24.31	20044W.33.24.32
33w	3000k	4905	>80	36°	1,7	20044W.33.36.30	20044W.33.36.31	20044W.33.36.32
33w	3000k	4905	>80	60°	1,7	20044W.33.60.30	20044W.33.60.31	20044W.33.60.32
39w	3000k	5590	>80	16°	1,7	20044W.39.16.30	20044W.39.16.31	20044W.39.16.32
39w	3000k	5645	>80	24°	1,7	20044W.39.24.30	20044W.39.24.31	20044W.39.24.32
39w	3000k	5645	>80	36°	1,7	20044W.39.36.30	20044W.39.36.31	20044W.39.36.32
39w	3000k	5645	>80	60°	1,7	20044W.39.60.30	20044W.39.60.31	20044W.39.60.32
18w	4000k	2985	>80	16°	1,7	20044W.18.16.40	20044W.18.16.41	20044W.18.16.42
18w	4000k	3015	>80	24°	1,7	20044W.18.24.40	20044W.18.24.41	20044W.18.24.42
18w	4000k	3015	>80	36°	1,7	20044W.18.36.40	20044W.18.36.41	20044W.18.36.42
18w	4000k	3110	>80	60°	1,7	20044W.18.60.40	20044W.18.60.41	20044W.18.60.42
25w	4000k	4075	>80	16°	1,7	20044W.25.16.40	20044W.25.16.41	20044W.25.16.42
25w	4000k	4115	>80	24°	1,7	20044W.25.24.40	20044W.25.24.41	20044W.25.24.42
25w	4000k	4115	>80	36°	1,7	20044W.25.36.40	20044W.25.36.41	20044W.25.36.42
25w	4000k	4245	>80	60°	1,7	20044W.25.60.40	20044W.25.60.41	20044W.25.60.42
33w	4000k	5100	>80	16°	1,7	20044W.33.16.40	20044W.33.16.41	20044W.33.16.42
33w	4000k	5150	>80	24°	1,7	20044W.33.24.40	20044W.33.24.41	20044W.33.24.42
33w	4000k	5150	>80	36°	1,7	20044W.33.36.40	20044W.33.36.41	20044W.33.36.42
33w	4000k	5150	>80	60°	1,7	20044W.33.60.40	20044W.33.60.41	20044W.33.60.42
39w	4000k	5770	>80	16°	1,7	20044W.39.16.40	20044W.39.16.41	20044W.39.16.42
39w	4000k	5830	>80	24°	1,7	20044W.39.24.40	20044W.39.24.41	20044W.39.24.42
39w	4000k	5830	>80	36°	1,7	20044W.39.36.40	20044W.39.36.41	20044W.39.36.42
39w	4000k	5830	>80	60°	1,7	20044W.39.60.40	20044W.39.60.41	20044W.39.60.42

\* Lichtstroom van armatuur, tolerantie van +/- 10%

\* Luminaire luminous flux, tolerance of +/- 10%



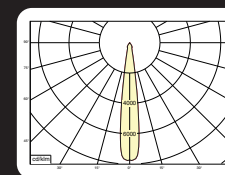
#### Opties:

- 90CRI of 97CRI
- 2700k, 3500k
- Vlees, Brood of Crisp white (2700k, 3000k of 3500k)

#### Options:

- 90CRI or 97CRI
- 2700k, 3500k
- Meat, Bread or Crisp white (2700k, 3000k or 3500k)

Levensduurverwachting (uren) Life expectancy (hours)		
Watt	L80B10	L90B10
9	168.000	79.000
12	166.000	78.000
18	149.000	70.000
25	135.000	64.000
33	120.000	57.000
39	115.000	54.000



#### 20044W.18.16.30

18w 3000k 2840lm 16°  
ηLB 96%