

Marici 240 White



IP44-65



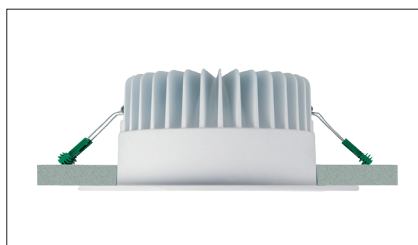
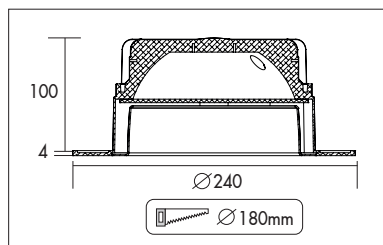
Ronde LED downlight met een lage inbouwhoogte. Voorzien van decoratieve aluminium (99,9%) witte reflector (UGR<18). Gesatineerde PS Microprisma afscherming voor extra comfort. Zeer geschikt als basis verlichting in gangen of kantoren. Zeer brede bundel (73°) en hoge efficiency (max 125lm/w) met CRI>80. Wit gelakte (RAL 9003) aluminium behuizing. Wordt geleverd inclusief externe driver. Directe aansluiting op 220-240VAC. Onderhoudsarm en hoge levensduurverwachting. Kleur stabiliteit, Mac Adam <3. Vijf jaar garantie.

Round LED downlight with shallow build-in height. High gloss aluminum reflector (99,9%) with white finish (UGR<18). Extra wide beam angle (73°) and high efficiency (max 125lm/w) with CRI>80. Satinated PS Microprism diffuser for high comfort. White painted aluminum die cast body (RAL9003). Very suitable as general lighting in hallways and offices. Delivered including external driver. Direct connection to 220-240VAC. Low maintenance and high life expectancy. Colour stability, Mac Adam <3. Fast and easy mounting with springs. Five years warranty.

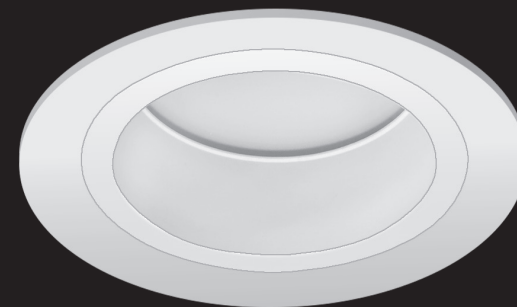
Wattage Watts	Kleur Colour	Lumen* Lumen*	Amperage (mA) Amperage (mA)	kg	Noodvoorz. (u) Emergency (h)	Artikel nr. Article no.	Dimbaar (1-10V) Dimmable (1-10V)	Dali Dali	Casambi Casambi
9w	3000k	1125	250	1,3	1/3	62022W.09.30.W	62022W.09.31.W	62022W.09.32.W	62022W.09.35.W
12w	3000k	1565	350	1,3	1/3	62022W.12.30.W	62022W.12.31.W	62022W.12.32.W	62022W.12.35.W
18w	3000k	2190	500	1,3	1/3	62022W.18.30.W	62022W.18.31.W	62022W.18.32.W	62022W.18.35.W
25w	3000k	2990	700	1,3	1/3	62022W.25.30.W	62022W.25.31.W	62022W.25.32.W	62022W.25.35.W
33w	3000k	3745	900	1,3	1/3	62022W.33.30.W	62022W.33.31.W	62022W.33.32.W	62022W.33.35.W
39w	3000k	4310	1050	1,3	1/3	62022W.39.30.W	62022W.39.31.W	62022W.39.32.W	62022W.39.35.W
9w	4000k	1185	250	1,3	1/3	62022W.09.40.W	62022W.09.41.W	62022W.09.42.W	62022W.09.45.W
12w	4000k	1645	350	1,3	1/3	62022W.12.40.W	62022W.12.41.W	62022W.12.42.W	62022W.12.45.W
18w	4000k	2300	500	1,3	1/3	62022W.18.40.W	62022W.18.41.W	62022W.18.42.W	62022W.18.45.W
25w	4000k	3140	700	1,3	1/3	62022W.25.40.W	62022W.25.41.W	62022W.25.42.W	62022W.25.45.W
33w	4000k	3930	900	1,3	1/3	62022W.33.40.W	62022W.33.41.W	62022W.33.42.W	62022W.33.45.W
39w	4000k	4445	1050	1,3	1/3	62022W.39.40.W	62022W.39.41.W	62022W.39.42.W	62022W.39.45.W

* Lichtstroom van armatuur, tolerantie van +/- 10%

* Luminaire luminous flux, tolerance of +/- 10%



INBOUW DOWNLIGHTS RECESSED DOWNLIGHTS



Opties:

- 1,5 meter snoer met 3-polige Shuko stekker
- 0,5 meter snoer + GST18i3® connector (niet - dimbaar)
- 0,5 meter snoer + GST18i3® and BST14i2 connector (dim)
- 0,5 meter snoer + GST18i5® Blue connector male (dim)
- Andere RAL kleur
- 2700K, 3500k, 5000k of hogere CRI waarde 90/97
- Vlees, brood of Crisp White
- IP65

Options:

- 1,5m cable with Shuko 3-pin plug
- 0,5 meter cable + GST18i3® connector (non - dimmable)
- 0,5 meter cable + GST18i3® and BST14i2 connector (dim)
- 0,5 meter cable + GST18i5® Blue connector male (dim)
- Different RAL color
- 2700k, 3500k, 5000k or higher CRI values 90/97
- Meat, bread or Crisp White
- IP65

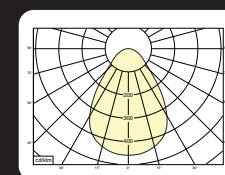


optional dust cover 61396-240

Levensduurverwachting (uren)

Life expectancy (hours)

Watt	L80B10	L90B10
9	168.000	79.000
12	166.000	78.000
18	149.000	70.000
25	135.000	64.000
33	120.000	57.000
39	115.000	54.000



62022W.12.30.W

12w 3000k 1565lm
ηLB 74%

melis lighting