

# Aron Tilt 152 Striped WHITE



SPOTS SPOTS

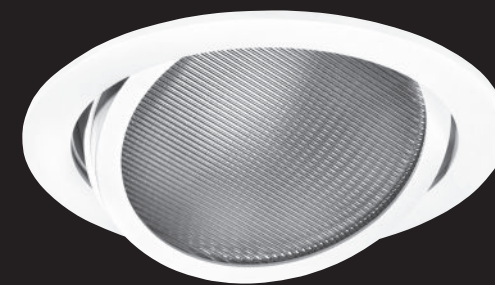
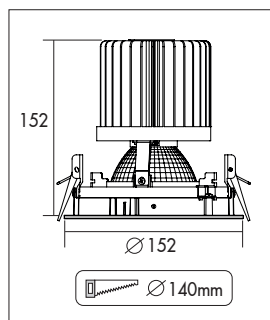
Ronde kantelbare LED downlight voor krachtige accentverlichting. 350° draaibaar en 25° kantelbaar. Gefacetteerde hoogglans 99,98% aluminium reflector met helder gehard glazen afscherming met lineaire gravering voor ovale lichtbundel. Dankzij een modulaire ring kunnen verschillende accessoires op de Aron geklikt worden. Hierdoor zeer geschikt als accent verlichting in hotels en winkels. Verkrijgbaar in wit (RAL 9003) en zwart (RAL 9005). Wordt geleverd inclusief externe driver. Directe aansluiting op 220-240VAC. Onderhoudsarm en hoge levensduurverwachting (50.000 uur L90B10). Kleur stabiliteit, Mac Adam <3. Snelle en eenvoudige montage met veren. Vijf jaar garantie.

Round tiltable LED downlight for powerful accent lighting. Rotates through 350° and pivots through 25°. Faceted glossy 99,98% aluminium reflector with clear hardened glass shielding with linear engraving for oval beam. Onto the modular die cast aluminium trim several accessories can be clicked making it very suitable as spot light in shops, hotels and restaurants. Standard available in RAL9003 (white) or RAL 9005 (black). Direct connection to 220-240VAC. Low maintenance and high life expectancy (50.000 hours L90B10). Colour stability, Mac Adam <3. Fast and easy mounting with springs. Five years warranty.

Wattage Watts	Kleur Colour	Lumen* Lumen*	CRI CRI	Graden Degree	Gewicht (kg) Weight (kg)	Noodvoorz. (u) Emergency (h)	Artikel nr.* Article no.*	1-10V 1-10V	Dali Dali
9w	3000k	1025	>80	20°	1,6	1/3	20042SW.0920.30	20042SW.0920.31	20042SW.0920.32
12w	3000k	1390	>80	20°	1,6	1/3	20042SW.1220.30	20042SW.1220.31	20042SW.1220.32
18w	3000k	1915	>80	20°	1,6	1/3	20042SW.1820.30	20042SW.1820.31	20042SW.1820.32
25w	3000k	2575	>80	20°	1,6	1/3	20042SW.2520.30	20042SW.2520.31	20042SW.2520.32
33w	3000k	3185	>80	20°	1,6	1/3	20042SW.3320.30	20042SW.3320.31	20042SW.3320.32
39w	3000k	3615	>80	20°	1,6	1/3	20042SW.3920.30	20042SW.3920.31	20042SW.3920.32
9w	3000k	1025	>80	40°	1,6	1/3	20042SW.0940.30	20042SW.0940.31	20042SW.0940.32
12w	3000k	1390	>80	40°	1,6	1/3	20042SW.1240.30	20042SW.1240.31	20042SW.1240.32
18w	3000k	1915	>80	40°	1,6	1/3	20042SW.1840.30	20042SW.1840.31	20042SW.1840.32
25w	3000k	2575	>80	40°	1,6	1/3	20042SW.2540.30	20042SW.2540.31	20042SW.2540.32
33w	3000k	3185	>80	40°	1,6	1/3	20042SW.3340.30	20042SW.3340.31	20042SW.3340.32
39w	3000k	3615	>80	40°	1,6	1/3	20042SW.3940.30	20042SW.3940.31	20042SW.3940.32
9w	4000k	1075	>80	20°	1,6	1/3	20042SW.0920.40	20042SW.0920.41	20042SW.0920.42
12w	4000k	1465	>80	20°	1,6	1/3	20042SW.1220.40	20042SW.1220.41	20042SW.1220.42
18w	4000k	2010	>80	20°	1,6	1/3	20042SW.1820.40	20042SW.1820.41	20042SW.1820.42
25w	4000k	2710	>80	20°	1,6	1/3	20042SW.2520.40	20042SW.2520.41	20042SW.2520.42
33w	4000k	3350	>80	20°	1,6	1/3	20042SW.3320.40	20042SW.3320.41	20042SW.3320.42
39w	4000k	3810	>80	20°	1,6	1/3	20042SW.3920.40	20042SW.3920.41	20042SW.3920.42
9w	4000k	1075	>80	40°	1,6	1/3	20042SW.0940.40	20042SW.0940.41	20042SW.0940.42
12w	4000k	1465	>80	40°	1,6	1/3	20042SW.1240.40	20042SW.1240.41	20042SW.1240.42
18w	4000k	2010	>80	40°	1,6	1/3	20042SW.1840.40	20042SW.1840.41	20042SW.1840.42
25w	4000k	2710	>80	40°	1,6	1/3	20042SW.2540.40	20042SW.2540.41	20042SW.2540.42
33w	4000k	3350	>80	40°	1,6	1/3	20042SW.3340.40	20042SW.3340.41	20042SW.3340.42
39w	4000k	3810	>80	40°	1,6	1/3	20042SW.3940.40	20042SW.3940.41	20042SW.3940.42

\* Lichtstroom van armatuur, tolerantie van +/- 10%

\* Luminaire luminous flux, tolerance of +/- 10%

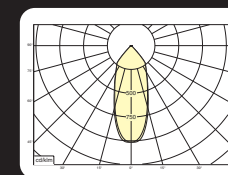


## Opties:

- 1,5 meter snoer met 3-polige Schuko stekker
- 0,5 meter snoer + GST18i3® connector (niet - dimbaar)
- 0,5 meter snoer + GST18i3® and BST14i2 connector (dim)
- 0,5 meter snoer + GST18i5® Blue connector male (dim)
- 2700K, 3500k, 5000k of hogere CRI waarde 90/97
- Vlees, brood of Crisp White

## Options:

- 1,5m cable with Schuko 3-pin plug
- 0,5 meter cable + GST18i3® connector (non - dimmable)
- 0,5 meter cable + GST18i3® and BST14i2 connector (dim)
- 0,5 meter cable + GST18i5® Blue connector male (dim)
- 2700k, 3500k, 5000k or higher CRI values 90/97
- Meat, bread or Crisp White



**20042SW.2540.30**

25w 3000k 40° 2575lm  
ηLB 64%

melis lighting